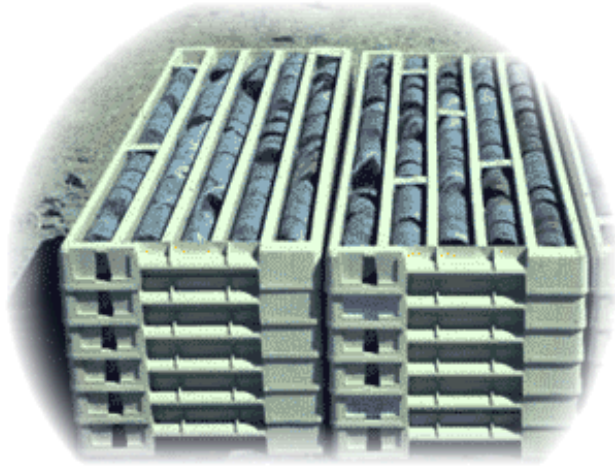




The Right Stuff of Tahoe, Incorporated

As a Matter of Fact, We ARE Rocket Scientists™

- **Four sizes: B, N, H, P**
- **UV- and weather-resistant polypropylene**
- **Color-coded or recycled white**
- **One-piece construction. Easy to use – no assembly**



Interlocking. Stackable. Modular. Convenient drain holes. Slots for strapping. Lids available, but rarely needed.



Scribe handwritten notes on aluminum ID tags that slot into the end ...



End slot for aluminum ID tag, shown here on H-size Explorer Tray (see Accessories page of this product guide)



or, even better ...

... use our RightCoreWare™ to automatically print tough, plastic-laminated labels: readable by people, bar-coded for computers.

For details, see our RightCoreWare™ product guide.

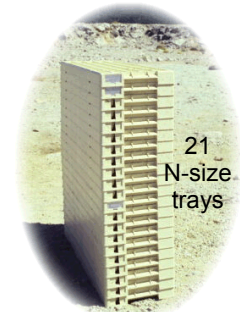
Dovetails with Clip-in Markers (see Accessories page of this product guide)



Four sizes:
B, N, H, P

For annotating samples

At left: Markers clipped into N-size Explorer Tray



21
N-size
trays

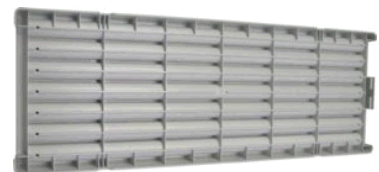
Stacks much more stably than other trays and boxes

- **13 years of proven field use.** Durable to minus 40° C (– 40° F, MSDS available)
- **Four sizes, one footprint:** 106.5 × 38.4 centimeters (41.93 × 15.12 inches)
- **Each compartment holds one linear meter (39.37 inches) of core**
 - **P-size tray:** 3 compartments. 3 meters (9.84 feet) of core
 - **H-size tray:** 4 compartments. 4 meters (13.12 feet) of core
 - **N-size tray:** 5 compartments. 5 meters (16.41 feet) of core
 - **B-size tray:** 7 compartments. 7 meters (22.97 feet) of core
 - Compartments are *rounded* inside for optimum core stability
 - Etched compartment divider tops. Bar code them, or write notes on them
- **For more details about Explorer Trays and accessories, or for information about how to order, refer to the remaining pages of this product guide**



Built-in handles

Ribs add strength



Shown here: underside of B-size Explorer Tray




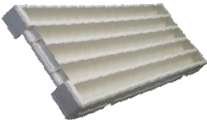
The Right Stuff of Tahoe, Incorporated


As a Matter of Fact, We ARE Rocket Scientists™

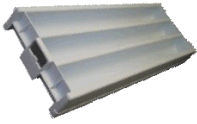
Explorer Core Tray

Specifications and ordering information.
Remember to accessorize with lids,
clip-in markers, and aluminum ID tags.

Explorer Tray, B-size. Pallet of 123. With skid. Product ID RST-00-050-123	116.5 cm L x 106.5 cm W x 221 cm H (45.86 in L x 41.93 in W x 87.00 in H)	278 kg (612.89 lbs)	Pastel gray: \$2275.50 Recycled white: \$2091.00
Each tray: holds 7 m (22.97 ft) of core, up to 38 mm (1.50 in) in diameter	106.5 cm L x 38.4 cm W x 6.0 cm H (41.93 in L x 15.12 in W x 2.36 in H)	2.3 ± 0.1 kg (5.07 ± 0.22 lbs)	Pastel gray: \$18.50 Recycled white: \$17.00
	Tray capacity: 7939 cc (484 cubic in) of cylindrical core 7 m L x 38 mm OD (22.97 ft L x 1.50 in OD)	Efficiency: 1 m of core per 0.33 kg of tray (1 ft of core per 0.22 lb of tray)	Cost benefit: Pastel gray: \$2.64 per m (\$0.81 per ft) of core Recycled white: \$2.43 per m (\$0.74 per ft) of core
If tray is filled with granite (s.g. = 2.6) ...	then net weight = 20.64 kg (45.50 lbs)	... and gross weight = 22.94 kg (50.58 lbs)	

Explorer Tray, N-size. Pallet of 117. With skid. Product ID RST-00-051-117	116.5 cm L x 106.5 cm W x 232 cm H (45.86 in L x 41.93 in W x 91.33 in H)	270 kg (595.25 lbs)	Beige: \$2164.50 Recycled white: \$1989.00
Each tray: holds 5 m (16.41 ft) of core, up to 52 mm (2.04 in) in diameter	106.5 cm L x 38.4 cm W x 6.5 cm H (41.93 in L x 15.12 in W x 2.56 in H)	2.3 ± 0.1 kg (5.07 ± 0.22 lbs)	Beige: \$18.50 Recycled white: \$17.00
	Tray capacity: 10619 cc (647 cubic in) of cylindrical core 5 m L x 52 mm OD (16.41 ft L x 2.04 in OD)	Efficiency: 1 m of core per 0.46 kg of tray (1 ft of core per 0.31 lb of tray)	Cost benefit: Beige: \$3.70 per m (\$1.13 per ft) of core Recycled white: \$3.40 per m (\$1.06 per ft) of core
If tray is filled with granite (s.g. = 2.6) ...	then net weight = 27.61 kg (60.87 lbs)	... and gross weight = 29.91 kg (65.94 lbs)	

Explorer Tray, H-size. Pallet of 87. With skid. Product ID RST-00-052-87	116.5 cm L x 106.5 cm W x 227 cm H (45.86 in L x 41.93 in W x 89.37 in H)	201 kg (443.13 lbs)	Pastel green: \$1609.50 Recycled white: \$1479.00
Each tray: holds 4 m (13.12 ft) of core, up to 65 mm (2.56 in) in diameter	106.5 cm L x 38.4 cm W x 8.4 cm H (41.93 in L x 15.12 in W x 3.31 in H)	2.3 ± 0.1 kg (5.07 ± 0.22 lbs)	Pastel green: \$18.50 Recycled white: \$17.00
	Tray capacity: 13273 cc (810 cubic in) of cylindrical core 4 m L x 65 mm OD (13.12 ft L x 2.56 in OD)	Efficiency: 1 m of core per 0.58 kg of tray (1 ft of core per 0.39 lb of tray)	Cost benefit: Pastel green: \$4.63 per m (\$1.41 per ft) of core Recycled white: \$4.25 per m (\$1.30 per ft) of core
If tray is filled with granite (s.g. = 2.6) ...	then net weight = 34.51 kg (76.08 lbs)	... and gross weight = 36.81 kg (81.15 lbs)	

Explorer Tray, P-size. Pallet of 66. With skid. Product ID RST-00-053-66	116.5 cm L x 106.5 cm W x 230 cm H (45.86 in L x 41.93 in W x 90.55 in H)	203 kg (447.54 lbs)	Pastel blue: \$1320.00 Recycled white: \$1254.00
Each tray: holds 3 m (9.84 ft) of core, up to 86.5 mm (3.4 in) in diameter	106.5 cm L x 38.4 cm W x 10.7 cm H (41.93 in L x 15.12 in W x 4.21 in H)	2.9 ± 0.1 kg (6.39 ± 0.22 lbs)	Pastel blue: \$20.00 Recycled white: \$19.00
	Tray capacity: 17629 cc (1075 cubic in) of cylindrical core 3 m L x 86.5 mm OD (9.84 ft L x 3.4 in OD)	Efficiency: 1 m of core per 0.96 kg of tray (1 ft of core per 0.65 lb of tray)	Cost benefit: Pastel blue: \$6.67 per m (\$2.03 per ft) of core Recycled white: \$6.33 per m (\$1.93 per ft) of core
If tray is filled with granite (s.g. = 2.6) ...	then net weight = 45.83 kg (101.03 lbs)	... and gross weight = 48.73 kg (107.43 lbs)	

Payment and shipping terms by quotation. Add 6% for credit card purchases via PayPal. All prices in US dollars, subject to change. Explorer Core Tray is a registered trademark of International Mining Supplies Pty Ltd

- Email purchase orders to OrderStuff@The-Right-Stuff.com
 - Or phone us at 1.775.322.5186
- Ask about discounts on orders of five or more pallets

The Right Stuff of Tahoe, Incorporated
The Right Place
3341 Adler Court
Reno, NV 89503-1263



The Right Stuff of Tahoe, Incorporated

As a Matter of Fact, We ARE Rocket Scientists™

Explorer Tray Accessories

Steel lids cover topmost trays. Markers and tags separate and annotate core samples, dovetail with our RightCoreWare™ bar coding system.

Kick the habit of scrawling on wooden blocks!

Use **Explorer Clip-in Markers** to separate and annotate your core samples



Four sizes:
B, N, H, P

Slim profile clips in.
Shown here on P-size
Explorer Core Tray



Easily write on the
etched surface ...



... or, even better ...

... use RightCoreWare™ to automatically print tough, plastic-laminated labels: readable by people, bar-coded for computers.



RightCoreWare™ labels
really stick to
Explorer Core Markers

For details, see our RightCoreWare™ product guide.

Clip-in Marker, B-size. Pastel gray. Lot of 500: Product ID RST-00-055-500	\$0.40 each 15 g (0.53 oz)	\$200.00 per lot 7.5 kg (16.56 lb)
Clip-in Marker, N-size. Beige. Lot of 500: Product ID RST-00-056-500	\$0.40 each 15 g (0.53 oz)	\$200.00 per lot 7.5 kg (16.56 lb)

Clip-in Marker, H-size. Pastel green. Lot of 500: Product ID RST-00-057-500	\$0.40 each 15 g (0.53 oz)	\$200.00 per lot 7.5 kg (16.56 lb)
Clip-in Marker, P-size. Pastel blue. Lot of 300: Product ID RST-00-058-300	\$0.50 each 15 g (0.53 oz)	\$150.00 per lot 7.5 kg (16.56 lb)

Use **Aluminum ID Tags** to annotate your
core samples, on a per-tray basis

Scribe handwritten notes on
these soft metal tags. Slot
them into the end of trays ...



or, even better ...

... use RightCoreWare™ to
automatically print tough, plastic-
laminated labels: readable by people,
bar-coded for computers.

1D or high density
2D bar code
captures and
preserves drilling
data, such as hole
number and depth.

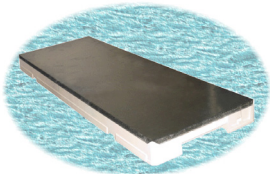
RightCoreWare™ labels
really stick to
aluminum ID tags



ID Tag. 8.9 x 4.3 x 0.13 cm (3.5 x 1.688 x 0.005 in). Fits all Explorer Core Trays. Lot of 100. Product ID RST-00-054-100	\$0.20 each 1.5 g (0.05 oz)	\$20.00 per lot 150 g (5.3 oz)
-------------------------------------------------------------------------------------------------------------------------------------	--------------------------------	-----------------------------------

End slot for
ID tag, shown here
on H-size Explorer Tray

Explorer Core Tray Lids



106.5 × 38.4 cm (41.93 × 15.12 in) zinc-galvanized steel, 0.65 mm (0.026 in) thick.
You'll need far fewer lids than trays. Each tray serves as a lid for the tray underneath it.
Consequently, users who do prefer lids tend to use them only to cover trays at the top of a stack.

Lid. Fits all Explorer Core Trays. Lot of 10. Product ID RST-00-059-10	\$15.00 each 2 kg (4.4 lb)	\$150.00 per lot 20 kg (44 lb)
----------------------------------------------------------------------------------	-------------------------------	-----------------------------------

Payment and shipping terms by quotation. Add 6% for credit card purchases via PayPal. All prices in US dollars, subject to change. Explorer Core Tray is a registered trademark of International Mining Supplies Pty Ltd

- Email purchase orders to OrderStuff@The-Right-Stuff.com
- Or phone us at 1.775.322.5186

We invite enquiries from corporations,
government organizations, and point-of-sale retailers.

The Right Stuff of Tahoe, Incorporated
The Right Place
3341 Adler Court
Reno, NV 89503-1263